

ELIOS Quick Deployment



ELIOS QD Eldor portable, light weight and Quick Deployment integrated observation & detection system kit.

- ▶ Military & Police Special Units
- ▶ Night Camp deployments
- ▶ Critical Mission Vehicles
- ▶ Parking aircraft / Tanks

ELIOS QD is a scalable, robust observation system equipped with dual sensors Thermal & CCD cameras in various types of FOVs lenses, Laser Range Finder (LRF) mounted Pan Tilt Unit (PTU), C2 application installed on ruggedized tablet PC, Tripod, Rugged case consists of battery and digital Recorder.

ELIOS QD is a battery operated system with instant ad hoc wireless communication enables deployment of the system and starts operation in less than 15 minutes.

Instant wireless connection

- ▶ Advanced 4G LTE based mobile technology. Supporting urban and rural communication with non-line-of-sight range up to 10 km, as well as line-of sight operations with ranges up to 30 km.
- ▶ Radio Microwave point-to-point, point-to-multipoint LOS or non-LOS communication
- ▶ 3G Cellular, third generation of mobile telecommunications technology, enables high capacity bandwidth using aggregated SIM cards.

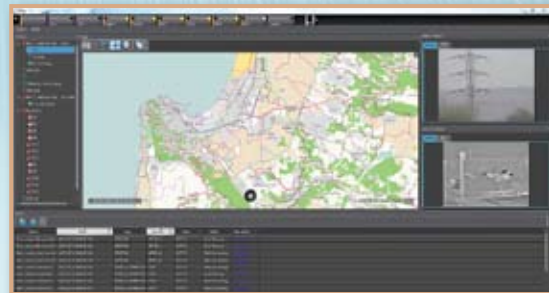
Features

- ▶ Proportional motor speed according to camera zoom position
- ▶ High sensitivity, un-cooled, long wave thermal imager sensor

- ▶ All weather, day & night operation
- ▶ Color & black & white CCD camera, built in optical zoom X36
- ▶ Integration to Radar, automatic assessment of the camera to radar targets
- ▶ Up to 8 hours of battery operation, optional extended battery, rechargeable form vehicle or 220VAC.
- ▶ Transit & Storage cases
- ▶ Heavy duty and professional Tripod with quick release mechanism.

Mobile Command & Control application:

- ▶ Installed on ruggedized tablet PC
- ▶ Real time GIS mapping, GPS positioning
- ▶ Video Management System
- ▶ Event Management module
- ▶ Recording Voice, Video and Data



QD series can be ordering options:

- ▶ QD250, Dual FOV 45-135 mm
- ▶ QD1510, Continuous zoom 15-100 mm
- ▶ QD50/75, Fixed FOC of 50 or 75 mm

Eldor Communication Technologies Ltd is a leader provider of diverse solutions for Defense & Security systems. Eldor specialized in implementation of turn-key projects or as a supplier of subsystems components.

eldor Communication Technologies Ltd.

22 Hamelacha st. IND. Park Cible, Rosh Haain, 48091 Israel
Office: +972-3-902-4750 Fax: +972-3-902-4760 www.eldor-il.com messi@eldor-il.com

ELIOS Quick Deployment



Thermal Channel, Detection & Recognition Distances:

Wide FOV 12°(H) X 9° (V)

Detection of human target : 1150 Meter
Recognition of human target : 350 Meter
Detection of vehicle target : 2800 Meter
Recognition of vehicle target : 950 Meter

Narrow FOV 4°(H) X 3° (V)

Detection of human target : 2,400 Meter
Recognition of human target : 800 Meter
Detection of vehicle target : 6,000 Meter
Recognition of vehicle target : 2,000 Meter

Distances defined above may vary due to atmospherically conditions



Thermal Imager

Sensor format: VOX or Asi microbolometer 640X480 ▶ Spectral band: 8-14 μm ▶ NETD: <50° mK (##1 optics)

Lens: 2 X FOV: W 45mm – T 135mm ▶ FOV (45mm): 12°(H) X 9° (V) ▶ FOV (135mm): 4°(H) X 3° (V) ▶ Focus control: Automatic
▶ Electronic zoom: 2X, 4X ▶ Black hot / white hot control

Day Camera (color/BW)

Sensor type:

SONY FCB EX1010 ▶ 1/4 " type Ex view HAD CCD ▶ Approx 440,000 Pixels (PAL)

Lens:

Zoom: 36X Optical / 12X Digital ▶ F=3.4 mm to 122.4 mm ▶ F1.6 to F4.5 ▶ Angle of view: 57.8° to 1.7° ▶ Focus control: Auto/manual
▶ S/N ratio: better then 50 dB

PAN / TILT unit

PTU type: Zero Backlash, Slip Ring ▶ Azimuth range: 360° continuous ▶ Elevation range: -90° to +40° ▶ Minimum Pan speed : 0.05° sec ▶ Maximum Pan speed: 60° Second ▶ Preset accuracy: 0.0075° ▶ Maximum load: 9 Kg.

General

Power: 24VDC ▶ Environment: IP65 ▶ Operating temp: -10°/+50°
Ext range -20°/+55° ▶ Interface: RS485 / 422 / Pelco D ▶ Weight: 10Kg ▶ Single / Dual video output



eldor Communication Technologies Ltd.

22 Hamelacha st. IND. Park Cible, Rosh Haain, 48091 Israel
Office: +972-3-902-4750 Fax: +972-3-902-4760 www.eldor-il.com messi@eldor-il.com